



**ZEISS Metrology &
Scanning Services**
Experience and Technology



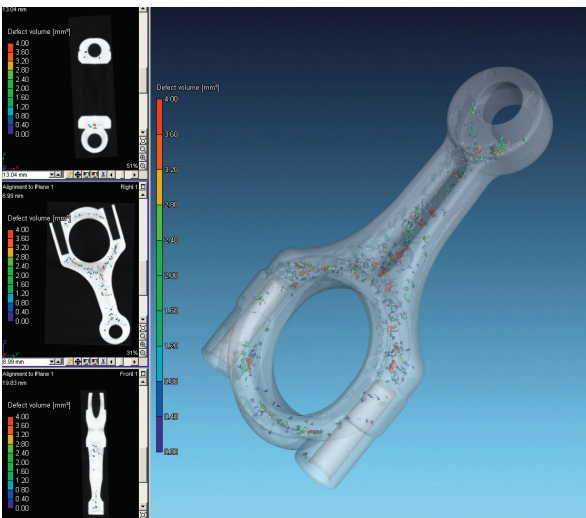
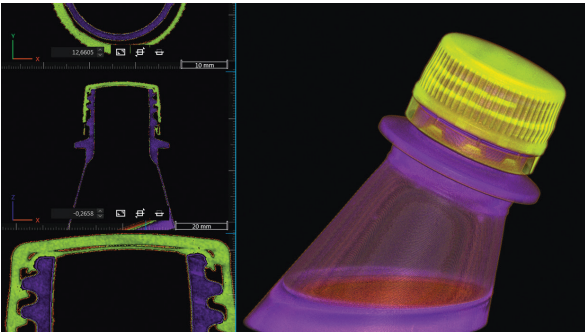
Seeing beyond

CT Scanning

Medical Devices, Assemblies, Containers Closures & Forensics

These components are challenging metrology tasks due to the thin plastic walls, the tiny and many geometrical details and issues associated with the conventional way of destructively cross sectioning the part/assembly.

- Assembly inspection: non-destructive digital x-sectioning
- 3D leak path and fit analysis
- Wall thickness and warp analysis
- 3D color-mapped dimensional report to CAD
- Forensics analysis
- 3D analysis



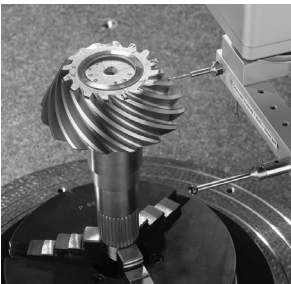
Metrology Services

Contract Measurement

Are you looking to have your workpiece measured quickly without investing in inspection equipment? Then look no further. With our excellent measuring technology, we will efficiently provide you with the information you need. Be it contact, optical or computed tomography, form, surface or contour – our flexible line of instruments enable fast and easy completion of your measuring tasks. We measure any part – from micro-mechanics to shipbuilding.

Gears, Hobs and Rotors

Programming and inspection of these components are challenging due to complex design geometries, five and six-axis machining processes and tight manufacturing tolerances. Our engineers have years of experience with these applications. We use the most accurate and current inspection equipment and software, and tested and proven quality processes.



Training

Metrology Knowledge

Training takes place in our ZEISS Quality Excellence Center in Eskilstuna and is tailored to your needs – your software, machine and your sensor configuration. Our global training concept ensures standardized content. Customized on-site training is also available upon request. Contact us to discuss what type of training best fits your requirements or learn more about the program here: sites.legasonline.se/zeiss



AUKOM

Global Training Standard for Production Measurement Technology

AUKOM training gives you the opportunity to increase your knowledge and to improve your measuring skills. You learn standardized methods of entire measuring runs and receive indepth training in all aspects of coordinate measuring technology. The multi-level, modular design of the courses enables you to obtain standardized knowledge and to enhance trust in your own measuring results.



Why Choose Us for Measuring?

ZEISS Experience & Technology

Have your parts scanned accurately and quickly, without investing in specialized inspection tools. We have expertise in a range of industries, including molded plastics, medical device manufacturing, micro parts, forensics, aerospace and automotive. With precision state-of-the-art equipment and professional, well trained metrologists, you will get the results you need.

- ZEISS trained inspectors
- Aukom certification
- PTB-certified software
- Robust Lab monitoring for Temperature & Humidity
- Your parts are inspected by ZEISS at ZEISS
- Quick turnaround with expediate service available
- 100% satisfaction guaranteed

Engineering services

ZEISS offers onsite support, vacation staffing, and measuring process assessment. We provide mold and plastic assembly validation, First Article Inspections (FAI), and part reverse-engineering.

Global and Nordic lab network

We can help you no matter where you are, yet our local metrology service locations make it very convenient. Our engineers have dedicated contact, optical, laser, CT, and visual inspection systems available at each facility. You are welcome to visit the Nordic ZEISS Quality Excellence Center in Eskilstuna.

Get a quote in one day

Contact us today at +46 8 459 25 60 for a FREE consultation. All we need is a few items such as a part photo, a blueprint, inspection requirements and batch size.

Unique Inspection job?

We provide inspection from the smallest to the biggest parts and simplest to the most unique applications. We also perform surface finish, roundness and micro profile inspection as well as white and blue light scanning.

Contact Us:

Software support

Contact: +46 8 459 25 30
swsupport.metrology.nordics@zeiss.com

Geometry assurance & measuring services, training and software

Contact: +46 8 459 25 60
eskilstuna.metrology.nordics@zeiss.com

Training program and registration

Learn more: sites.legaonline.se/zeiss

Carl Zeiss AB

Tegeluddsvägen 76 | SE - 115 28 Stockholm
www.zeiss.se | info.se@zeiss.com

ZEISS Quality Excellence Center

Västerleden 62 | SE - 633 47 Eskilstuna | Tel.: +46 8 459 25 60